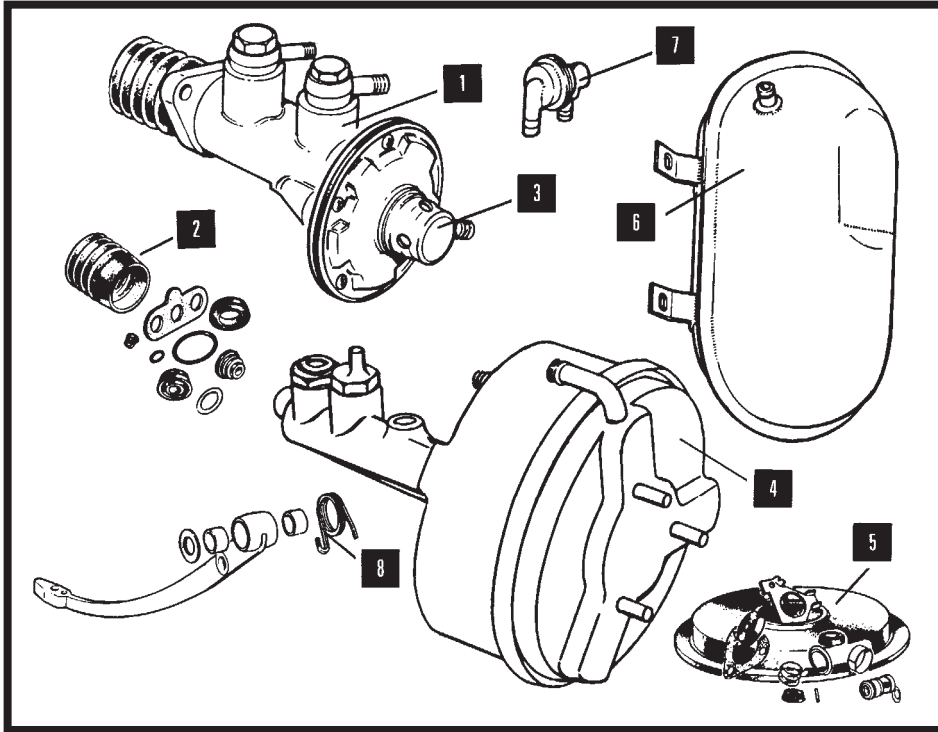


# BRAKE CONTROLS



VACUUM TANK		Item 6
MODEL	PART No	QTY PER VEHICLE
XK 150	C24910	1
6 CYL 'E' TYPE	C24099	1
V12 'E' TYPE	C34237	1
ALL XJS	C36471	1

VACUUM VALVE		Item 7
MODEL	PART No	QTY PER VEHICLE
XK 150 & 6 CYL 'E'	C14693	1
V12 'E' TYPE	C34041	1
XJ S 1/2	C34041	1
XJ S3, XJS PRE HE, XJS HE & XJS 3.6	CAC4188	1

MASTER CYLINDER		Item 1
MODEL	PART No	QTY PER VEHICLE
XK 120 TANDEM	3620XK	1
XK 120/140 SINGLE	3120XK	1
XK 150	3200XK	1
3.8 'E' TYPE	C19968	2
4.2 'E' TYPE	C26767	1
V12 'E' TYPE	C26767	1
XJ S1	11964 (RHD) 64068676 (LHD)	1 1
XJ S2 EARLY, XJS PRE HE, XJS HE	CAC1582 (RHD) CAC1583 (LHD)	1 1
XJ S2 LATER, S3	CAC1228 (RHD) CAC1229 (LHD)	1 1

MASTER CYLINDER VALVE		Item 3
MODEL	PART No	QTY PER VEHICLE
XK 120 TANDEM	3150XK Tilt Valve	2
4.2 & V12 'E' TYPE	SSB1032 Reaction Valve	1

PEDAL RETURN SPRING		Item 8
MODEL	PART No	QTY PER VEHICLE
XK 120-140	C4801	1
4.2 & V12 'E' TYPE	C25495	1
ALL XI, XJS UPTO 1987	C24689	1

MASTER CYLINDER KITS		Item 2
MODEL	PART No	QTY PER VEHICLE
XK 120 TANDEM	3160XK	1
XK 120/140 SINGLE	3130XK	1
XK 150	3210XK Girling 3211XK Dunlop	1 1
3.8 'E' TYPE	SP9016/1	2
4.2 & V12 'E' TYPE	10918	1
XJ S1	11968	1
XJ S2 EARLY	RTC1129	1
XJS PRE HE, XJS HE & XJS 3.6	AAU6839	1
XJ S2 LATE, S3	AAU6838	1

SERVO UNITS		Item 4
MODEL	PART No	QTY PER VEHICLE
XK 150	C19612	1
4.2 'E' TYPE	C24625	1
V12 'E' TYPE	C35564	1
XJ S1 EARLY	12898 (RHD) 11963 (LHD)	1 1
XJ S1 LATE, S2 EARLY	JS584 (RHD) JS583 (LHD)	1 1
XJ S2 LATE (Chassis no. needed)	RTC 1298 (RHD) RTC1127 (LHD) OR CAC1226 (RHD) CAC1227 (LHD)	1 1 1 1
XJ S3	CAC1226 (RHD) CAC1227 (LHD)	1 1
XJS PRE HE EARLY	RTC1127	1
XJS PRE HE LATE, XJS HE & XJS 3.6	CAC1227	1

\* Exchange units available new or reconditioned.

SERVO KITS		Item 5
MODEL	PART No	QTY PER VEHICLE
4.2 'E' TYPE	10938	1
V12 'E' TYPE	12889	1
ALL XI, XJS	12446	1