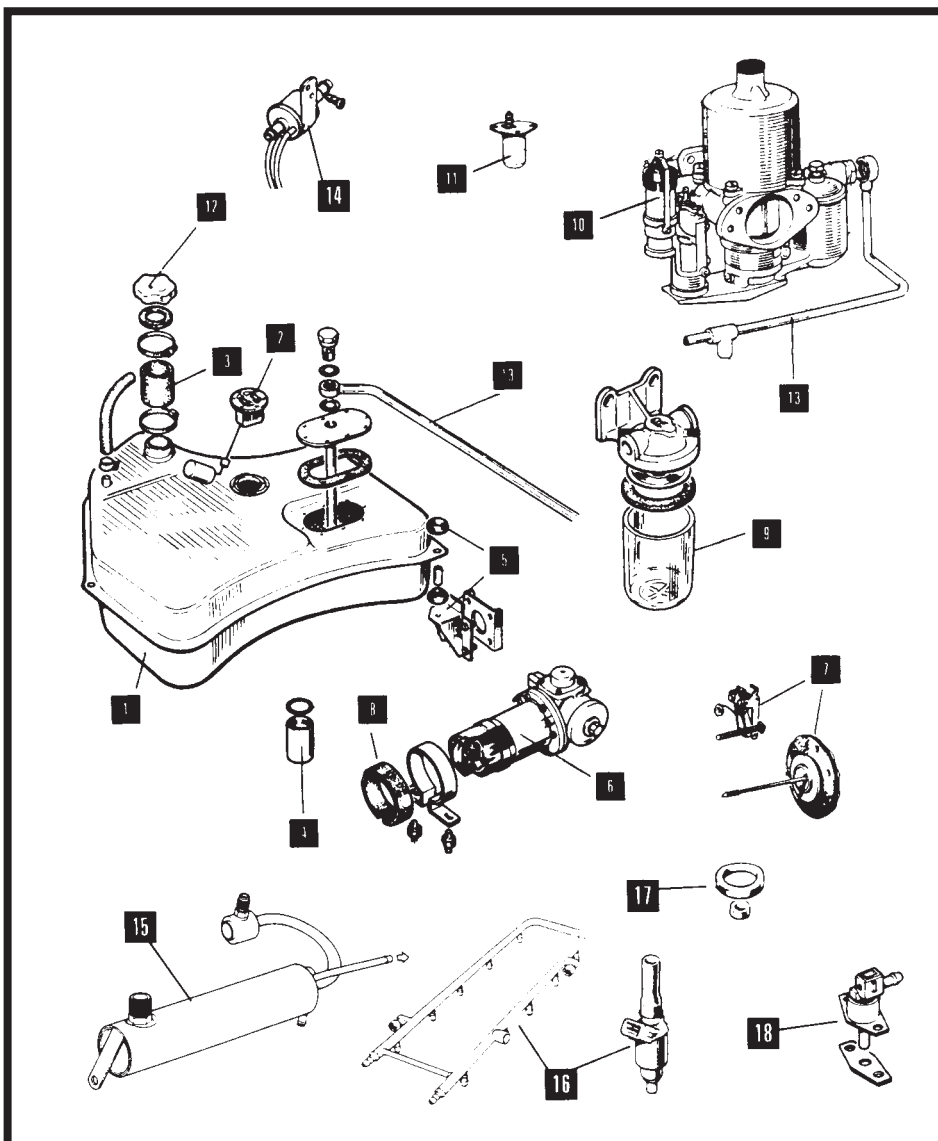


FUEL SYSTEM



FILLER HOSE		Item 3
MODEL	PART No	QTY PER VEHICLE
ALL XK MODELS	7110XK	1
ALL 'E' TYPE	C43958	1
XJS ALL FHC	C43958	1
XJS ALL CABRIOLETS & CONVERTIBLES	CBC2887	1

TANK DRAIN SUMP & FILTERS		Item 4
MODEL	PART No	QTY PER VEHICLE
ALL XK MODELS	C990/1	1
6 CYL 'E' TYPE	C19302 Sump C21900 Filter	1 1
V12 'E' TYPE	C32305 Sump CBC5649 Filter	1 1
XJ6/XJ12 ALL MODELS	C44665 Sump CBC5649 Filter	1 1

PETROL TANK MOUNTINGS		Item 5
MODEL	PART No	QTY PER VEHICLE
6 CYL 'E' TYPE	C19846 Bush C6390 Tube BD16008 Bkt. BD16553 Bkt.	6 3 1 1
V12 'E' TYPE	C19846 Bush C8976 Tube BD37892 Bkt.	6 3 1
XJ6/XJ12 ALL MODELS	C27737 Mounting Block	4
XJS ALL F.H.C.	C42806 Strap C42804 Bkt. C42803 Plate C42817 Trunnion C42805 Bkt. C27737 Block	1 1 1 1 1 1
XJS ALL CABRIOLET	CAC7204	2

FUEL TANKS		Item 1
MODEL	PART No	QTY PER VEHICLE
XK 120 ROADSTER	9881XK	1
XK 120 DHC/FHC	9882XK	1
XK 140	9880XK	1
XK 150	9883XK	1
SER I 'E' TYPE	C19801	1
SER II 'E' TYPE	C32888	1
V12 'E' TYPE	C32046	1
XJ6 S1/S2 2.8/4.2 EARLY & XJ12 S1 & S2 EARLY	C40190 RH C40191 LH	1 1
XJ6 S2 LATE, S3 4.2, XJ12 S2 LATE & S3	CAC5522/1 RH CAC5523/1 LH	1 1
XJ6 S2/S3 3.4 WITH IMMersed PUMPS	CAC5516/1 RH CAC5517/1 LH	1 1
XJS V12 ALL FHC	EBC5188*	1
XJS V12 ALL CABRIOLETS	EBC9092	1
XJS V12 ALL CONVERTIBLES	EBC8719	1

LEVER SENDER UNITS		Item 2
MODEL	PART No	QTY PER VEHICLE
XK 120	5400XK	1
XK 140/150	5410XK	1
6 CYL 'E' TYPE	C20429	1
V12 'E' TYPE	C33213	1
XJ6 S1/2 2.8/4.2, XJ6 S3 4.2 EARLY, XJ12 S1/2 & S3 EARLY	C27738 RH C27739 LH	1 1
XJ6 S2/S3 3.4 WITH IMMersed PUMPS, XJ6 S3 4.2 LATE & XJ12 S3 LATER	DAC5498 RH DAC5499 LH	1 1
XJS ALL FHC	DAC5500	1
XJS ALL CABRIOLETS	DAC5525	1
XJS ALL COVERTIBLES	DAC10183	1

Gasket for all XK^s and 'E' Types C937
Gasket for all XF and XJS^s ARA1502J.

FUEL PUMPS		Item 6
MODEL	PART No	QTY PER VEHICLE
ALL XK MODELS	C9688/1	1
6 CYL 'E' TYPE	AZX1308	1
V12 'E' TYPE	AZX1405/J	1
XJ6 S1/S2 EARLY	AZX1308	2
XJ6 S2 LATE, S3 (Fuel Injection)	CBC5657	1
XJ6 S2/S3 3.4 (IMMersed PUMPS)	CAC3551 RH CAC3552 LH	1 1
XJ12 S1/S2 EARLY	AZX1405/J	2
XJ12 S2 LATE, XJS PRE HE (Fuel Injection)	CAC2026	1
XJ12 S3, XJS HE & XJS 3.6 (Fuel Injection)	CBC5657	1

* See also accessories

* Fuel Hoses CBC8637 and CBC8639 are to be changed with the tank as the diameter of the holes are different to original spec.



PUMP REPAIR KITS		Item 7
MODEL	PART No	QTY PER VEHICLE
ALL XK MODELS	XKE31/XK	1
6 CYL 'E' TYPE	XKE31	1
V12 'E' TYPE	XKE31	2
XJ6 S1/S2 EARLY, XJ12 S1/S2 EARLY	XKE31	2

FUEL PUMP FOAM		Item 8
MODEL	PART No	QTY PER VEHICLE
V12 'E' TYPE	C36067	1PR
XJ12 S1 EARLY	C36067	1PR
XJ12 S1 LATE S2 EARLY	C38678	2
XJ12 S2 LATE, XJS PRE HE	C43969	2
XJ12 S3, XJS HE	CAC2481	2

FUEL FILTERS		Item 9
MODEL	PART No	QTY PER VEHICLE
XK 150 & ALL 'E' TYPE UP TO V12 IS1664 IS2166	C27588 (Filter Assy) C28080 (Filter Element)	1 1
V12 'E' TYPE FROM IS1665 IS2166	C38490 (Filter Assy) JS660 (Filter Element)	1 1
XJ6 S1 EARLY	C36467 (Filter Assy) C28080 (Filter Element)	1 1
XJ6 S1 LATE, S2 EARLY	JS660 (Filter Element)	1
XJ12 S1/2 CARB	C38490 (Filter Assy)	1
XJ6 S2 LATE & S3 3.4	C41817 or CAC2264	1
XJ6 S3 4.2	EAC3112	1
XJ12 S2/S3 EARLY XJS PRE HE	EAC1498	1
XJ12 S3 LATE, XJS HE	EAC3112	1

CHOKE SOLENOID		Item 10
MODEL	PART No	QTY PER VEHICLE
ALL XK MODELS	AUD9490	1
XJ6 S1 EARLY	AUD9490	1
XJ6 VARIOUS MODELS	TZX1002* (AED UNIT)	1

* Exchange only.

OTTER SWITCH		Item 11
MODEL	PART No	QTY PER VEHICLE
ALL XK MODELS	C33177	1
XJ6 S1 EARLY	C33177	1

FUEL FILLER CAP		Item 12
MODEL	PART No	QTY PER VEHICLE
XK 120/140 & EARLY 150	BD3699 (Lid) 1320XK (Lock)	1 1
ALL 'E' TYPE	C23601/1 Non Locking C12816 Locking	1 1
XJ6 S1/2 XJ12 S1/2	#	
XJ6/12 S3	BAC1494	2
XJS ALL FHC	CAC2961 Non Locking CAC3565 Locking	1 1
XJS ALL CABRIOLETS	BBC5936	1
XJS ALL CONVERTIBLES	BDC7628	1

Ring for further details.

FUEL LINES		Item 13
MODEL	PART No	QTY PER VEHICLE
XK 120 & XK 140	8316XK (Carb Feed Pipe) C11488 (Banjo Bolt) 8120XK (Flexible Pipe) Kunifer 3/8 * (Rigid Pipe)	1 2 1 A/R
XK 150	C15868 (Carb Feed Pipe) C11488 (Banjo Bolt) 8120XK (Flexible Pipe) Kunifer 3/8 * (Rigid Pipe)	1 2 1 A/R
3.8 'E' TYPE	C15823 (Carb Feed Pipe) C11488 (Banjo Bolt) XKCH8 * (Nylon Hose)	1 3 A/R
4.2 'E' TYPE	C15823 (Carb Feed Pipe) C11488 (Banjo Bolt) XKCH8 * (Nylon Hose) Kunifer 3/8 * (Rigid Pipe)	1 3 A/R A/R
V12 'E' TYPE	CAC8900/11 (Flexi Hose To Carb) Kunifer 3/8 *XKCH4 *Kunifer 5/16 *XKCH6	1 A/R A/R
XJ/XIS	See Below	

* All fuel pipes available to order – some original fittings may be required. Please telephone/fax with your exact requirements.

FUEL VALVES		Item 14
MODEL	PART No	QTY PER VEHICLE
V12 'E' TYPE	C34824	1
XJ6 S2/3 & XJ12 S3	CBC4269 (Fitted In Boot) CBC4270 RH CAC3939 LH	1 1 1
XJ12 S1/S2 EARLY	C36468 (Fitted In Boot)	2
XJ12 S2 LATE	CAC3940 (Fitted In Boot)	1

FUEL COOLERS		Item 15
MODEL	PART No	QTY PER VEHICLE
XJ6 S1	C33737	1
XJ6 S2 3.4/4.2 EARLY & S3 3.4 (CARB MODELS)	CBC2174	1
XJ6 S2 4.2 LATE & S3 4.2 to 1982 FUEL INJECTION	CAC1804	1
XJ6 S3 4.2 83-85 FUEL INJECTION	CAC7911	1
XJ12 S2 LATE XJ12 S3	CAC1681	1
XJS PRE HE	CAC2525	1
XJS HE	CAC7912	1

FUEL RAIL & INJECTORS		Item 16
MODEL	PART No	QTY PER VEHICLE
XJ6 S2/S3 EARLY	EAC2297 Rail EAC1851 Injector	1 6
XJ6 S3 LATE	EAC5350 Rail EAC1851 Injector	1 6
XJ12 S2 LATE XJ12 S3 EARLY & XJS PRE HE	C44519 Rail C45675 Injector	2 12
XJ12 S3 LATE & XJS HE	EAC8930 Rail (Non Cold Inj. Eng.) EAC8931 Rail (Cold Inj. Eng.) EAC7874 Injector (Short Hose) EAC7875 Injector (Long Hose)	1 1 10 2
XJS 3.6 UP TO 1987	EAC6273 Rail EAC4866 Injector	1 6
XJS 3.6 1987 ON	EAC 9690 Rail EAC4867 Injector	1 6

FUEL INJECTOR SEALS		Item 17
MODEL	PART No	QTY PER VEHICLE
ALL MODELS	EAC2414 (Large) EAC2415 (Small)	6/12 6/12

COLD START INJECTORS		Item 18
MODEL	PART No	QTY PER VEHICLE
XJ6 S2 LATE, S3 & XJS HE	EAC1383	1
XJ12 S2 & XJS PRE HE	C44987	2